



Guide to Calculation of Qualifying Sea Service

MASTERS AND DECK OFFICERS

PLEASE NOTE

This document contains information allowing an applicant to determine the qualifying sea service required for the different levels of STCW Master, Chief Mate and Deck Watch-keeper certificates of competency issued by AMSA, in accordance with the requirements of Marine Orders Part 3, Seagoing Qualifications.

Calculation of any qualifying sea service

- A period of sea service is to be reckoned by the calendar month.
- A period of sea service is to be calculated from the date of engagement to the date of discharge from a ship, with both the engagement and discharge days counting as full days.
- Days in excess of full months may be summed and counted towards sea service with each summation of 30 excess days from different periods of qualifying service reckoned as a month.
- Where a period of sea service is required to be on a ship of a particular size, then that size must be determined solely in Gross Tonnage (GT)

For further information refer to Marine Orders Part 3, issue 6, section D which can be referenced on the AMSA website, http://www.amsa.gov.au/shipping_safety/Marine_Orders/Marine_Orders_currently_in_force.asp for information about service on RAN or other vessel types please reference paragraph 26 in particular.

Disclaimer

This document is intended to be a guide only. Meeting the sea service requirements stated herein does not in itself indicate any entitlement to any certificate or qualification issued under Marine Orders Part 3, Seagoing Qualifications. Actual eligibility for a certificate can only be determined after verification of existing qualifications, training and sea service by AMSA.

The legislative framework covering Marine Qualifications may change from time to time. While every effort is made to ensure that this document reflects the requirements of the relevant legislation and regulations, it is possible that it may not fully reflect current formal requirements.

AMSA Examination Centres

Brisbane
Level 10, 410 Ann St
Brisbane QLD 4000
Phone (07) 3001 6800
Fax (07) 3001 6801

Melbourne
Level 13,
15 William St
Melbourne VIC 3000
Phone (03) 8612 6000
Fax (03) 8612 6003

Sydney
Level 5, 260 Elizabeth St
Sydney NSW 2000
Phone (02) 8918 1300
Fax (02) 8918 1390

Devonport
1st Floor, 35 Oldaker St,
Devonport TAS 7310
Phone (03) 6424 1597
Fax (03) 6424 8009

Fremantle
Level 1, Queensgate Centre
10 William Street, Fremantle WA 6160
Phone (08) 9430 2112
Fax (08) 9430 4757

If you consider you satisfy the sea service requirements for the certificate shown below, you can make application to AMSA for assessment for that particular qualification. You may contact any AMSA office listed on page 1 and seek a formal assessment of your sea time by an AMSA Examiner. A fee applies for this assessment.

The application must be submitted to AMSA along with substantiating evidence to determine your sea service and other eligibility criteria for the qualification. Details of requirements are contained within the AMSA Form 63, "Application for a Certificate and/or Endorsement", which can be downloaded at www.amsa.gov.au under "Forms" or obtained from any AMSA office. For further information refer to Marine Orders Part 3, issue 6 - Seagoing Qualifications.

MASTER

In addition to completing an approved course* of study and passing an AMSA oral exam, to be eligible for the issue of a certificate of competency as Master, a person must satisfy the following:

- (a) Hold an AMSA certificate of competency as Master < 3000GT, Chief Mate or Chief Mate < 3000GT or equivalent (*The acceptability of equivalent certificates issued by administrations other than AMSA will need to be assessed on a case-by-case basis by the Manager, Ship Operations and Qualifications*).
- (b) Completed at least 36 months qualifying sea service in charge of a navigation watch on ships 500 gross tonnage or over while holding a certificate of competency as Master < 3000GT, Chief Mate or Chief Mate < 3000GT, Watch-keeper Deck or Master < 500GT, or equivalent of which:
 - (i) At least 24 months sea service must have been on trading ships of 3000 gross tonnage or over, with at least 6 months of this service being served while holding a certificate of competency as Chief Mate or Chief Mate < 3000GT, or equivalent; AND
 - (ii) At least 24 months of the qualifying sea service serving must have been on voyages of 24 hours or more duration;
AND
 - (iii) At least 12 months sea service (inclusive of the 6 months specified in (i)), must have been while holding a certificate as Chief Mate or Chief Mate < 3000GT

As an alternative, and ONLY for a holder of a Master < 3000GT certificate, or equivalent, a person can satisfy the following:

- (c) Complete 12 months qualifying sea service as Master on trading ships of at least 1500GT whilst holding a Master < 3000GT, or equivalent; OR
- (d) Complete 12 months qualifying sea service as Watch-keeper Deck on trading ships of at least 3000GT whilst holding a Master < 3000GT, or equivalent; OR
- (e) A 12 months combination in total of both (c) and (d) approved by an AMSA assessment, AND have completed an AMSA approved course*, or oral examination in regard to appropriate additional knowledge

* For further information on approved and monitored courses, contact your nearest AMSA office

MASTER PATHWAYS

MINIMUM INITIAL QUALIFICATIONS

A certificate as Master <3000GT, Chief Mate or Chief Mate <3000GT, which need not be current.

MINIMUM SEA SERVICE

Normal pathway

At least 36 months qualifying sea service (QSS) in charge of a navigation watch on ships of at least 500GT while holding a certificate as Master <3000GT, Chief Mate, Chief Mate <3000GT Watchkeeper (Deck) or Master <500GT.

At least 24 months QSS must have been served on trading ships of at least 3000GT at least 6 months of which must have been served while holding a certificate as Chief Mate, or Chief Mate <3000GT;

At least 24 months must have been served on ships on voyages of 24 hours or more duration;

At least 12 months (including the 6 months mentioned above) must have been served while holding a certificate as Chief Mate or Chief Mate <3000GT

Have satisfactorily completed approved studies as specified in Marine Orders Part 3.

Hold Certificate of Proficiency in Survival Craft & Rescue boats other than fast rescue boats and GMDSS GOC Certificate

AMSA Oral Examination for the Issue of Certificate of Competency as Master

Alternative for Master <3000GT

12 months QSS as Master on ships of at least 1500GT while holding this certificate; or
12 months QSS as watchkeeper on ships of at least 3000GT while holding this certificate; or
12 months QSS in any combination of above:
and for all options above, has completed an approved upgrade course for ships of at least 3000GT or has passed an oral examination conducted by an AMSA examiner.

Hold Certificate of Proficiency in Survival Craft & Rescue boats other than fast rescue boats and GMDSS GOC Certificate

Issue of Certificate of Competency as Master

If you consider you satisfy the sea service requirements for the certificate shown below, you can make application to AMSA for assessment for that particular qualification. You may contact any AMSA office listed on page 1 and seek a formal assessment of your sea time by an AMSA Examiner. A fee applies for this assessment.

The application must be submitted to AMSA along with substantiating evidence to determine your sea service and other eligibility criteria for the qualification. Details of requirements are contained within the AMSA Form 63, "Application for a Certificate and/or Endorsement", which can be downloaded at www.amsa.gov.au under "Forms" or obtained from any AMSA office. For further information refer to Marine Orders Part 3, issue 6 - Seagoing Qualifications.

MASTER LESS THAN 3000GT

In addition to completing an approved course* of study and passing an AMSA oral exam, to be eligible for the issue of a certificate of competency as Master less than 3000GT, a person must satisfy the following:

- (a) Hold an AMSA certificate of competency as Chief Mate or Chief Mate < 3000GT or equivalent *(The acceptability of equivalent certificates issued by AMSA or administrations other than AMSA, will need to be assessed on a case-by-case basis by the Manager, Ship Operations and Qualifications).*
- (b) Completed at least 36 months qualifying sea service in charge of a navigation watch on ships 500 gross tonnage or over while holding a certificate of competency as Master < 500GT, Chief Mate, Chief Mate < 3000GT, Watch-keeper Deck or equivalent of which:
 - (i) At least 24 months sea service must have been on trading ships; AND
 - (ii) At least 24 months of the qualifying sea service serving must have been on voyages of 24 hours or more duration; AND
 - (iii) At least 12 months sea service must have been while holding a certificate as Chief Mate or Chief Mate < 3000GT or equivalent

* For further information on approved and monitored courses, contact your nearest AMSA office

MASTER <3000GT PATHWAY

MINIMUM INITIAL QUALIFICATIONS

A certificate as Chief Mate or Chief Mate <3000GT, which need not be current or a certificate considered to be equivalent under MO 3.



MINIMUM SEA SERVICE

At least 36 months qualifying sea service (QSS) in charge of a navigation watch on ships of at least 500GT while holding a certificate as Master <500GT, Chief Mate, Chief Mate <3000GT or Watchkeeper (Deck) or certificate considered equivalent under MO 3

At least 24 months QSS must have been served on trading ships;

At least 24 months must have been served on ships on voyages of 24 hours or more duration;

At least 12 months must have been served while holding a certificate as Chief Mate or Chief Mate <3000GT.



Have satisfactorily completed approved studies as specified in Marine Orders Part 3.



Hold Certificate of Proficiency in Survival Craft & Rescue boats other than fast rescue boats and GMDSS GOC Certificate



AMSA Oral Examination for the Issue of Certificate of Competency as Master <3000GT

If you consider you satisfy the sea service requirements for the certificate shown below, you can make application to AMSA for assessment for that particular qualification. You may contact any AMSA office listed on page 1 and seek a formal assessment of your sea time by an AMSA Examiner. A fee applies for this assessment.

The application must be submitted to AMSA along with substantiating evidence to determine your sea service and other eligibility criteria for the qualification. Details of requirements are contained within the AMSA Form 63, "Application for a Certificate and/or Endorsement", which can be downloaded at www.amsa.gov.au under "Forms" or obtained from any AMSA office. For further information refer to Marine Orders Part 3, issue 6 - Seagoing Qualifications.

MASTER LESS THAN 500GT

In addition to completing an approved course* of study and passing an AMSA oral exam, to be eligible for the issue of a certificate of competency as Master less than 500GT, a person must satisfy the following:

- (a) Be at least 20 years of age and hold an AMSA certificate of competency as Mate < 500GT, or hold an unrestricted Master Class Three certificate issued under the USL Code or NSCV Part D, or equivalent (*The acceptability of equivalent certificates issued by AMSA or administrations other than AMSA, will need to be assessed on a case-by-case basis by the Manager, Ship Operations and Qualifications*).
- (b) Completed at least 36 months qualifying sea service in charge of a navigation watch on ships 80 gross tonnage or over while holding a certificate of competency as Mate < 500GT, or unrestricted Master Class Three, Master Class Four or Master Class Five certificate issued under the USL Code or NSCV Part D, or equivalent, of which:
 - (i) If at least 12 months of the sea service required in (b) has been served in the capacity of Master or Chief Mate, then the total required qualifying sea service can be reduced to 24 months (instead of 36 months); AND
 - (ii) At least 24 months of the qualifying sea service served must have been on voyages of 24 hours or more duration; AND
 - (iii) At least 12 months sea service must have been served while holding a certificate as Mate < 500GT, or an unrestricted Master Class Three or Master Class Four certificate issued under the USL Code or NSCV Part D, or equivalent

IN ADDITION

- (v) For an extra endorsement as Chief Mate on ships of less than 3000GT on NEAR COASTAL voyages only, at least 6 months of the qualifying sea service must be on trading ships of at least 500GT
- (iv) For an extra endorsement as Master on ships of less than 3000GT on NEAR COASTAL voyages only, at least 24 months of the qualifying sea service must be on trading ships of at least 500GT

* For further information on approved and monitored courses, contact your nearest AMSA office

MASTER <500GT PATHWAY

MINIMUM INITIAL QUALIFICATIONS

Hold a certificate as Mate <500GT or USL or NSCV Part D certificate as unrestricted Master Class 3 or certificate considered to be equivalent under MO3



MINIMUM SEA SERVICE

At least 36 months qualifying sea service (QSS) as OOW on ships of at least 80GT while holding a certificate as Mate <500GT or unrestricted Master Class 3, Master Class 4 or Master Class 5.



CONDITIONS OF SEA SERVICE

At least 12 months QSS must have been served while holding a certificate as Mate <500GT or Master Class 3 or Master Class 4.

At least 24 months QSS must have been served on trading ships on voyages of 24 hours or more duration.

If 12 months of the required sea service has been served as Chief Mate or Master then the QSS can be reduced to not less than 24 months.

For endorsement as Master on ships of less than 3000GT on near coastal voyages at least 24 months QSS must have been served on trading ships of at least 500GT.

For endorsement as Chief Mate on ships of less than 3000GT on near coastal voyages at least 6 months QSS must have been served on trading ships of at least 500GT



Have satisfactorily completed approved studies as specified in Marine Orders Part 3.



Hold Certificate of Proficiency in Survival Craft & Rescue boats other than fast rescue boats and GMDSS GOC Certificate



AMSA Oral Examination for the Issue of Certificate of Competency as Master <500GT

If you consider you satisfy the sea service requirements for the certificate shown below, you can make application to AMSA for assessment for that particular qualification. You may contact any AMSA office listed on page 1 and seek a formal assessment of your sea time by an AMSA Examiner. A fee applies for this assessment.

The application must be submitted to AMSA along with substantiating evidence to determine your sea service and other eligibility criteria for the qualification. Details of requirements are contained within the AMSA Form 63, "Application for a Certificate and/or Endorsement", which can be downloaded at www.amsa.gov.au under "Forms" or obtained from any AMSA office. For further information refer to Marine Orders Part 3, issue 6 - Seagoing Qualifications.

CHIEF MATE

In addition to completing an approved course* of study and passing an AMSA oral exam, to be eligible for the issue of a certificate of competency as Chief Mate, a person must satisfy the following:

- (a) Hold an AMSA certificate of competency as Master less than 3000GT, Chief Mate < 3000GT or Watch-keeper Deck or equivalent *(The acceptability of equivalent certificates issued by AMSA or administrations other than AMSA, will need to be assessed on a case-by-case basis by the Manager, Ship operations and Qualifications, AMSA).*
- (b) Completed at least 12 months qualifying sea service in charge of a navigation watch on trading ships of 3000 gross tonnage or over while holding a certificate of competency as Master < 3000GT, Chief Mate < 3000GT, Watch-keeper Deck or equivalent all of which must have been on voyages of 24 hours or more duration.

As an alternative and ONLY for holders of Master < 3000GT or Chief Mate < 3000GT certificates, or equivalent, a person can satisfy the following:

- (c) Complete 12 months qualifying sea service as Chief Mate on trading ships of at least 1500GT whilst holding a Master < 3000GT or Chief Mate < 3000GT certificate, or equivalent; OR
- (d) Complete 6 months qualifying sea service as Watch-keeper Deck on trading ships of at least 3000GT whilst holding a Master < 3000GT or Chief Mate < 3000GT certificate, or equivalent; OR
- (e) A combination of both (c) and (d) approved by an AMSA assessment; AND
have completed an AMSA approved course*, or oral examination in regard to appropriate additional knowledge.

* For further information on approved and monitored courses, contact your nearest AMSA office

CHIEF MATE PATHWAYS

MINIMUM INITIAL QUALIFICATIONS

Hold a certificate as Master <3000GT or Chief Mate <3000GT or Watchkeeper (Deck), which need not be current.

MINIMUM SEA SERVICE

Alternative pathways

Chief Mate or Master <3000GT only

At least 12 months qualifying sea service (QSS) as Chief Mate on ships of at least 1500GT while holding certificate as Master <3000GT or Chief Mate <3000GT

or

6 months QSS as OOW on ships of at least 3000GT while holding a certificate as Master <3000GT or Chief Mate <3000GT

or any approved combination of this service;

and

for all options above, has completed an approved upgrade course for ships of at least 3000GT or has passed an oral examination conducted by an AMSA examiner.

Hold Certificate of Proficiency in Survival Craft & Rescue boats other than fast rescue boats and GMDSS GOC Certificate

Issue of Certificate of Competency as Chief Mate

All others

At least 12 months qualifying sea service (QSS) as OOW on ships of at least 3000GT while holding a certificate as Master <3000GT, Chief Mate <3000GT or Watchkeeper (deck) on ships on voyages of 24 hours or more duration.

College study

Have satisfactorily completed approved studies as specified in Marine Orders Part 3.

Hold Certificate of Proficiency in Survival Craft & Rescue boats other than fast rescue boats and GMDSS GOC Certificate

AMSA Oral Examination for the Issue of Certificate of Competency as Chief Mate

If you consider you satisfy the sea service requirements for the certificate shown below, you can make application to AMSA for assessment for that particular qualification. You may contact any AMSA office listed on page 1 and seek a formal assessment of your sea time by an AMSA Examiner. A fee applies for this assessment.

The application must be submitted to AMSA along with substantiating evidence to determine your sea service and other eligibility criteria for the qualification. Details of requirements are contained within the AMSA Form 63, "Application for a Certificate and/or Endorsement", which can be downloaded at www.amsa.gov.au under "Forms" or obtained from any AMSA office. For further information refer to Marine Orders Part 3, issue 6 - Seagoing Qualifications.

CHIEF MATE LESS THAN 3000GT

In addition to completing an approved course* of study and passing an AMSA oral exam, to be eligible for the issue of a certificate of competency as Chief Mate less than 3000GT, a person must satisfy the following:

- (a) Hold an AMSA certificate of competency as Master less than 500GT or Watch-keeper Deck, or equivalent *(The acceptability of equivalent certificates issued by AMSA or administrations other than AMSA, will need to be assessed on a case-by-case basis by the Manager, Ship Operations and Qualifications, AMSA).*
- (b) Completed at least 12 months qualifying sea service in charge of a navigation watch on trading ships of 500 gross tonnage or over while holding a certificate of competency as Master < 500GT or Watch-keeper Deck, or equivalent all of which must have been on voyages of 24 hours or more duration.

* For further information on approved and monitored courses, contact your nearest AMSA office

CHIEF MATE <3000GT PATHWAY

MINIMUM INITIAL QUALIFICATIONS

A certificate as Master <500GT or Watchkeeper (Deck), which need not be current or a certificate considered to be equivalent under MO 3



MINIMUM SEA SERVICE

At least 12 months qualifying sea service (QSS) as OOW on ships of at least 500GT while holding a certificate as Master <500GT or Watchkeeper (deck) on ships on voyages of 24 hours or more duration.



College study

Have satisfactorily completed approved studies as specified in Marine Orders Part 3.



Hold Certificate of Proficiency in Survival Craft & Rescue boats other than fast rescue boats and GMDSS GOC Certificate



AMSA Oral Examination for the Issue of Certificate of Competency as Chief Mate <3000GT

If you consider you satisfy the sea service requirements for the certificate shown below, you can make application to AMSA for assessment for that particular qualification. You may contact any AMSA office listed on page 1 and seek a formal assessment of your sea time by an AMSA Examiner. A fee applies for this assessment.

The application must be submitted to AMSA along with substantiating evidence to determine your sea service and other eligibility criteria for the qualification. Details of requirements are contained within the AMSA Form 63, "Application for a Certificate and/or Endorsement", which can be downloaded at www.amsa.gov.au under "Forms" or obtained from any AMSA office. For further information refer to Marine Orders Part 3, issue 6 - Seagoing Qualifications.

MATE LESS THAN 500GT

In addition to completing an approved course* of study and passing an AMSA oral exam, to be eligible for the issue of a certificate of competency as Mate less than 500GT, a person must satisfy the following:

- (a) Be at least 20 years of age and hold an unrestricted Master Class Four certificate issued under the USL Code or NSCV Part D, or equivalent (*The acceptability of equivalent certificates issued by AMSA or administrations other than AMSA, will need to be assessed on a case-by-case basis by the Manager, Ship Operations and Qualifications*).
- (b) Completed at least 36 months qualifying sea service performing watch-keeping duties in the deck department on ships 20 gross tonnage or over, of which:
 - (i) At least 24 months of the sea service required in (b) must be served in the capacity of Master or officer in charge of a navigational watch
 - (ii) At least 12 months of the qualifying sea service served must have been served on trading ships of at least 80GT and on voyages of 24 hours or more duration

IN ADDITION

- (iii) For an extra endorsement as Chief Mate on ships of less than 3000GT on NEAR COASTAL voyages only, at least 6 months of the qualifying sea service must be on trading ships of at

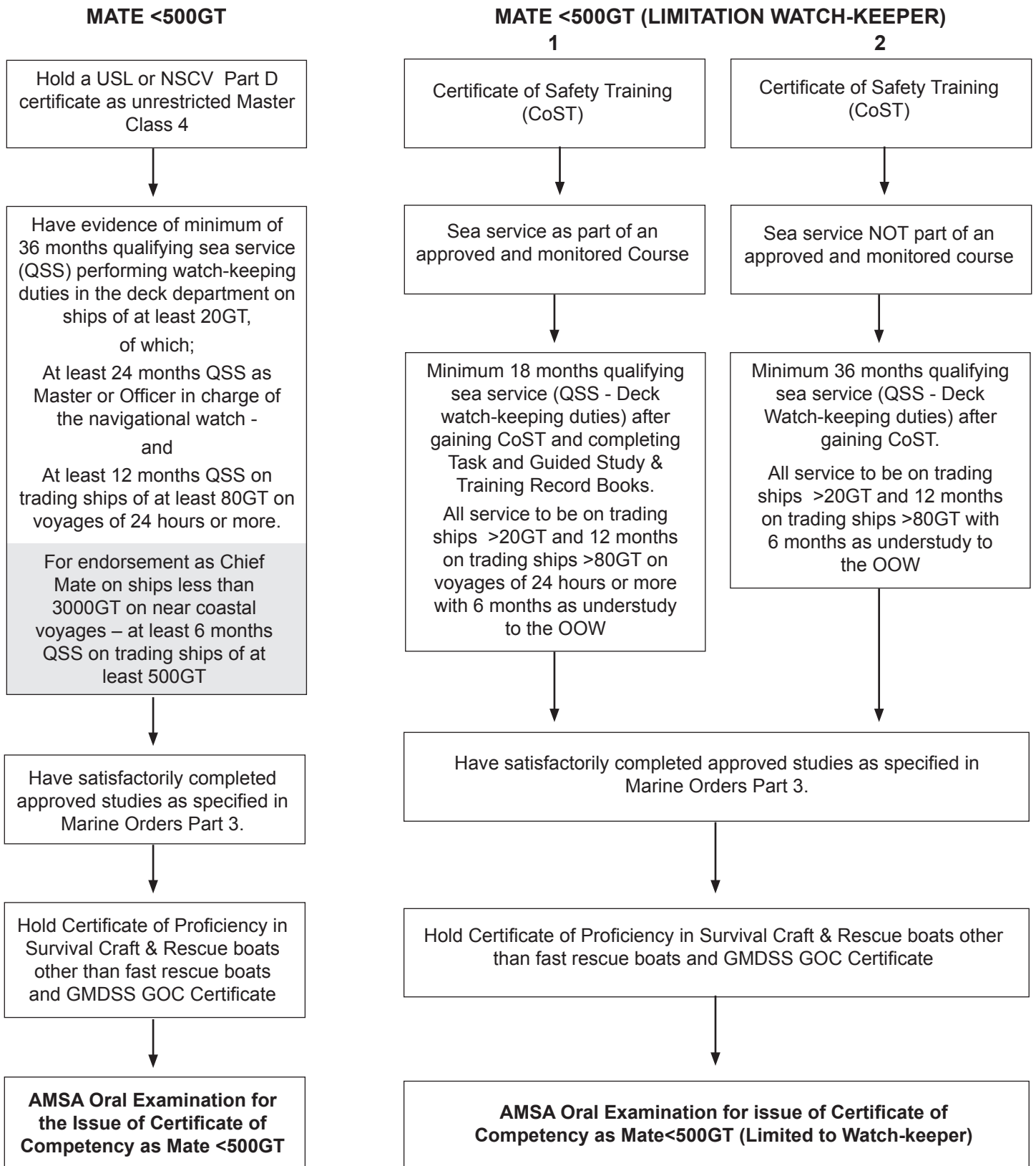
MATE LESS THAN 500GT WITH WATCH-KEEPER ONLY LIMITATION

If you do not have qualifying sea service as officer of the watch, then you may apply for a Mate less than 500GT with a limitation as "Watch-keeper only". In addition to completing an approved course* of study and passing an AMSA oral exam, to be eligible for the issue of a certificate of competency as Mate less than 500GT "Watch-keeper only", a person must be at least 20 years of age and have completed at least 36 months qualifying sea service (or 18 months if part of an AMSA approved and monitored course*) performing watch-keeping duties in the deck department on ships 20 gross tonnage or over:

- of which at least 12 months of the qualifying sea service served must have been served on trading ships of at least 80GT and on voyages of 24 hours or more duration:
- of which at least 6 months must have been served as understudy of the officer in charge of the

* For further information on approved and monitored courses, contact your nearest AMSA office

MATE <500GT AND MATE<500GT(LIMITATION WATCH-KEEPER) PATHWAYS



If you consider you satisfy the sea service requirements for the certificate shown below, you can make application to AMSA for assessment for that particular qualification. You may contact any AMSA office listed on page 1 and seek a formal assessment of your sea time by an AMSA Examiner. A fee applies for this assessment.

The application must be submitted to AMSA along with substantiating evidence to determine your sea service and other eligibility criteria for the qualification. Details of requirements are contained within the AMSA Form 63, "Application for a Certificate and/or Endorsement", which can be downloaded at www.amsa.gov.au under "Forms" or obtained from any AMSA office. For further information refer to Marine Orders Part 3, issue 6 - Seagoing Qualifications.

DECK WATCH-KEEPER

In addition to completing an approved course* of study and passing an AMSA oral exam, to be eligible for the issue of a certificate of competency as Watch-keeper Deck, a person must satisfy the following:

- (i) Completed an AMSA approved and monitored course* for trainee deck officers of at least 18 months qualifying sea service; OR
- (ii) Completed an AMSA approved and monitored course* for holders of a full certificate as an Integrated Rating (IR) of at least 24 months qualifying sea service; OR
- (iii) Completed at least 36 months qualifying sea service where you were regularly engaged in deck duties and served on ships of 500 gross tonnage or over, of which:
 - at least 12 months sea service must be on voyages of 24 hours or more duration; and
 - at least 6 months have been served as understudy of the officer in charge of a navigation watch on a trading ship.

* For further information on approved and monitored courses, contact your nearest AMSA office

DECK WATCH-KEEPER PATHWAYS

